

UNIQUE DC MOTOR BRAKE

AN ISO : 9901:2015 CERTIFIED COMPANY **UTORQUE ENGINEER**

MFG: D.C FAIL SAFE BRAKE, BRAKE MOTORS
(Normally On)



APPLICATIONS

Material handling equipment
Hoist & cranes
Brake Motor
Textile Machinery
Steel Plant Machinery

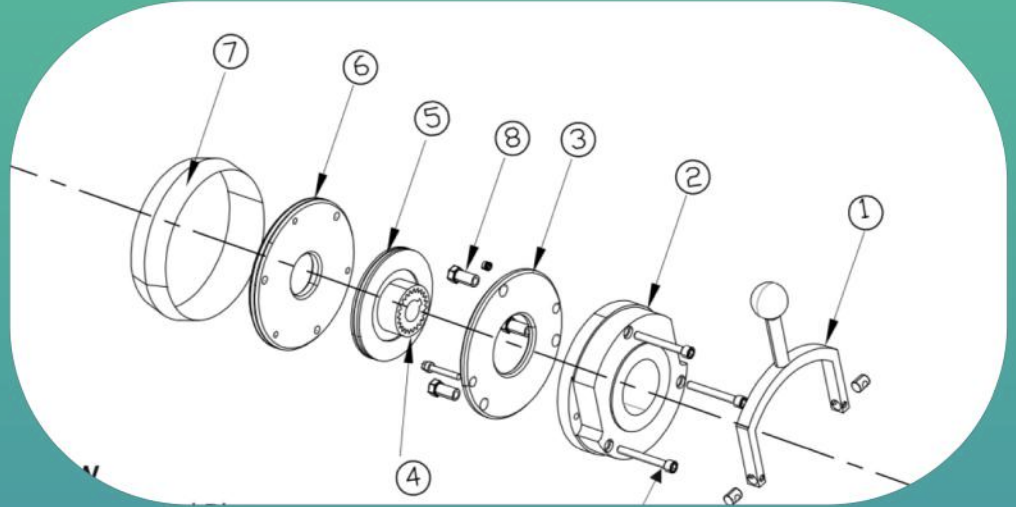
- Ceramic Industries
- Tyre machinery
- Printing Machinery
- Packaging Industries
- Marble or Granite Machinery

FEATURE

- Manual Release
- Dust Protecting Seal
- Compact Size
- Ease Installation
- Rust Protection To All Metal Parts

EXPLODE VIEW

1. Handle
2. Outerpole
3. Middle Plate
4. Hub
5. Rotor
6. End Plate
7. Sleeve
8. Golden Bolt
9. LN Key (Mounting Bolt)

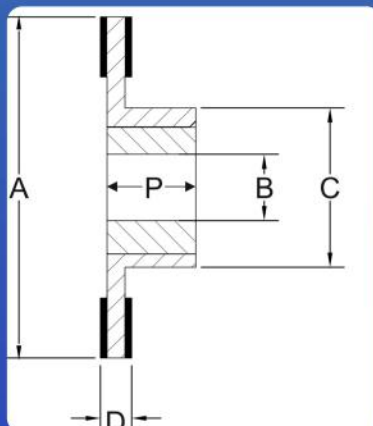


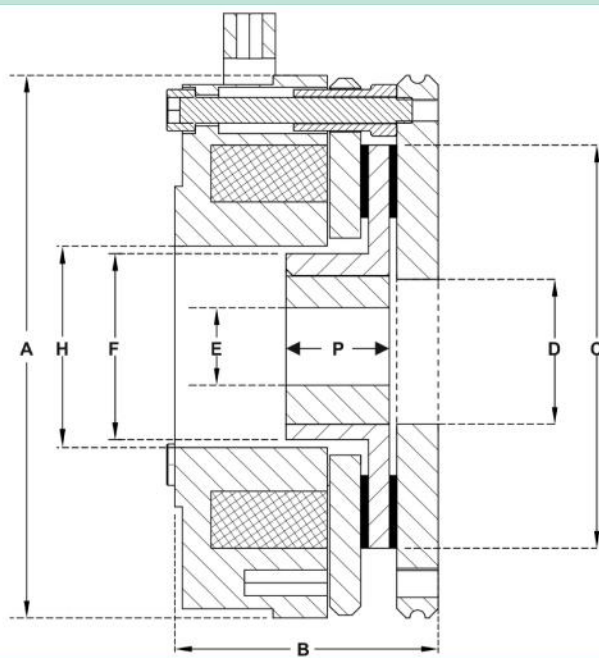
Working

Unique dc motor brake brake are absolutely fail safe in nature and find wide range of application where emergency stopping is required. When power cut-off happens brake remain in engaged condition for longer period of time. When electric current is given to the brake coil then the middle plate is gravited towards the uterpole against the spring force. Hence, rotor is released. When power cut-off strong compression springs push the middle plate to its original position and lock the rotor as well as motor. Unique Dc Fail Safe Brake is providing with unique manual release, Such brakes are known as Vormally On.

Rotor Dimensions

	Size-08	Size-10	Size-12	Size-14	Size-16	Size-18
A(od)	78	96	115	125	150	175
B(hub Bore Standard)	14,15	15.19	19,24,28	24,28	32,38	34
B(Hub Bore Non-Standard)	19	24	24	28	34	38
C(Boss Standard)	36	42.5	48	54.5	65	74
C(Boss Non Standard)	40	42.5	-	-	-	-
D(thickness)	9	10.5	12	13	15	16





Brake Dimensions

	Size-08	Size-10	Size-12	Size-14	Size-16	Size18
Supply Voltage to coil	24/190Vdc	24/190Vdc	24/190Vdc	24/190Vdc	24/190Vdc	24/190Vdc
A	105	128	148	164	188	212
B	55	66	74	86	103	99
C (Rotor Od)	78	95	115	125	150	174
D	30	42	50	57	70	80
E (Rotor Od)	15/19	15/19	19/24	24/28	32/38/p	34/38/p
F	36	42.5	48	54.5	63.5	63.5
H	42	44	50	57	70	80
P	20	20	26	30	30	38
Toqque (Nm)	10	20	34	65	85	155

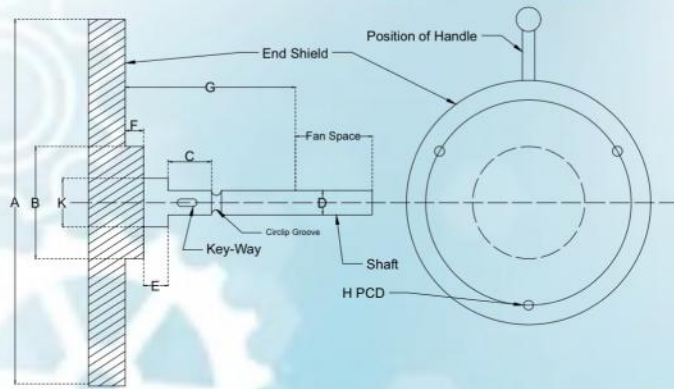
Selection

(1). Select Basic Brake according to the torque

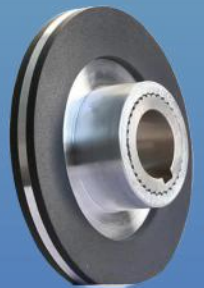
Torque (Nm) = {9550* (Motor Kw/RPM)} * Safety Factor (k)

Load Condtion	Safety Factor (k)
Low Masses, Light Equal Loading & non intermittent operation	2.0
Low Masses, Light Shock Loading & intermittent operation	2.5
Medium Masses, Light Equal Loading & intermittent operation	3.0
Diesel Engine Drive	4-5
Compressor Drive	5-6
Non Overhauling Loads	2-3
Overhauling Loads	3-4

Brake Mounting Drawing



Brake Size	08	10	12	14	16	18**
A	104	128	148	164	188	212
B	30	40	45	55	65	75
C	20	20	25	30	30	35
D	15	19	24	28	32	38
E	05	05	05	06	06	06
F	05	05	05	05	06	06
K	17	21	26	30	34	40
G(Height of Brake)	52	59	68	80	90	95
H(PCD)	90	112	132	145	170	196
H(Thread)	M5*3	m6*3	M6*1.25	m8*1.25	m8*1.25	m8*1.25
Brake Dia With Handle	130	154	180	230	230	270



UNIQUE DC MOTOR BRAKE

AN ISO : 9901:2015 CERTIFIED COMPANY

Address - Near Power House Gudli Udaipur Rajasthan-313024

Contact Us - 8233268311, 7976958311

Email-unique@dcmotorbrake.in

Website-dcmotorbrake.in

visit us at -www.dcmotorbrake.in

